



LHSG-CT-2003-503420

BioXHIT

**A European integrated project to provide a highly effective
technology platform for Structural Genomics.**

Life Sciences, Genomics and Biotechnology for Health

**WP5.2: De 5.2.15 Integrate visualiser into CCP4i and release with CCP4 software
suite**

Due date of deliverable: 31.12.2007
Actual submission date: 31.04.2008

Start date of project: 1.1.2004 **Duration: 60 months**

Organisation name of lead contractor for this deliverable: CCP4/STFC
Daresbury Author: Peter Briggs

De 5.2.15 Integrate visualiser into CCP4i and release with CCP4 software suite

The visualiser application developed in task 5.2 has been incorporated into the CCP4 graphical user interface CCP4i as part of the forthcoming version 6.1 release of the CCP4 software suite:

- **dbccp4i 0.4 (including the visualiser) incorporated into beta release CCP4 6.0.99c, which was made available to a subset of users in March 2008**

In this version the visualiser was available from the command line but not directly from the graphical interface.

- **dbccp4i 0.4.5 incorporated into beta release CCP4 6.0.99d, which was publicly released to all users in June 2008**

In this version the visualiser could be accessed directly from CCP4i by clicking on the “Graphical View of Project” on the main interface window (see figure 1); also for jobs with associated subjobs, the “View Files from Job” menus included options to launch the visualiser to view the subjobs (figure 2).

Delays in achieving this deliverable were due in part to slippage in the release schedule for CCP4 6.1. At the time of writing the beta releases can be obtained via anonymous FTP at <ftp://ftp.ccp4.ac.uk/cdb>

Once CCP4 6.1 has been released the current version of CCP4 will be downloadable from <http://www.ccp4.ac.uk/download>

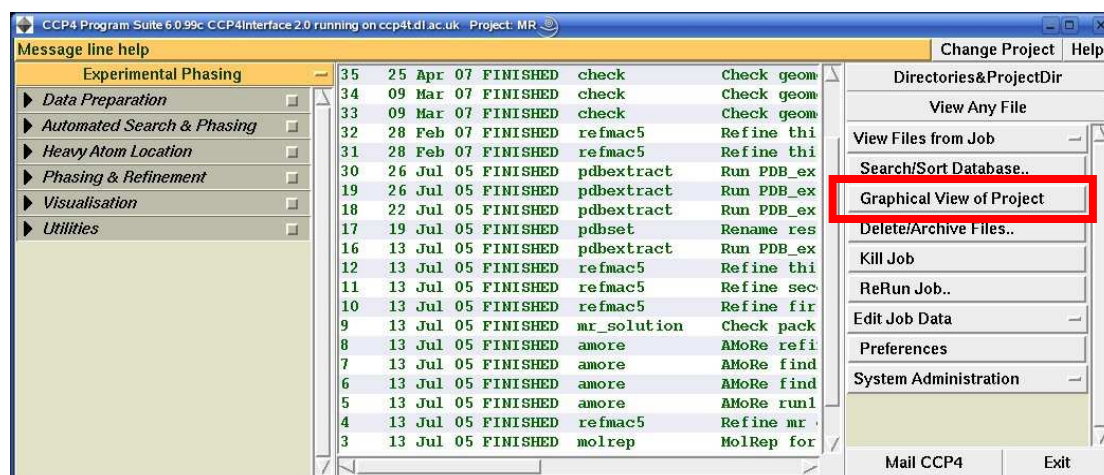


Figure 1: Main window of CCP4i highlighting button to launch database viewer

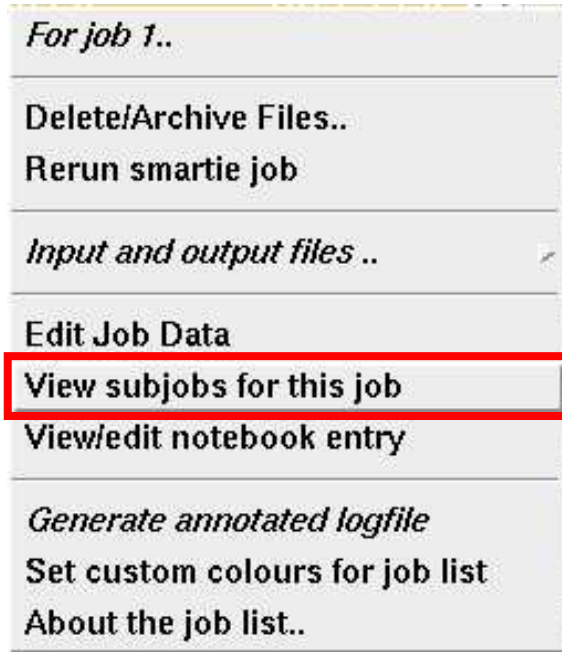


Figure 2: context menu (seen when right-clicking on a job in the CCP4i job list) gives option to launch dbviewer to see associated subjobs (if any are present). The option is not shown unless the job has associated subjobs.

Peter Briggs, CCP4