

# CCP4i - “Tricks and Tools”

*Peter Briggs*  
*CCP4 Daresbury*

# CCP4i - “Tricks and Tools”

- New in CCP4i 1.3.8
- Project Management Tools
  - *Project Directories*
  - *Job Database & Project History*
  - *Electronic Notebook*
  - *Report External Tasks*
- Data Harvesting
- File Viewers
  - *Loggraph*
  - *MapSlicer*
  - *AstexViewer*
- Installing new tasks
- Preferences

# New in CCP4i 1.3.8

- New interfaces:
  - OASIS
  - ACORN
  - ANISOANL, TLSANL
  - BEAST
  - PROFESSS
  - ROTAMER
  - WHAT\_CHECK (*n.b. the program must currently be obtained from CMBI*)
- New CCP4i-based application GET\_PROT (aka SAPHIRE)
  - *download & edit protein sequence data*
- Updated interfaces and tools:
  - SCALA
  - *Import Scaled Data task*
  - *Automatic reindexing facility in CAD task*
  - *Integrated viewers (MapSlicer, AstexViewer)*
  - *Task Interface Installer*

# Project Management Tools (1)

- Why Project Management?

- *Reminds you what you did six months ago*
- *Helps keep track of multiple projects and associated data*
- *Facilitates back-tracking (especially if things go wrong)*
- *Helps when depositing results & writing your paper*

- Project Directories

- *Set up aliases for project directories in “Project & Project Directories” Window*
- *All data files relating to one crystallographic project should be in a single project directory*

- Job Database & Project History

- *Stores parameters used to run each task*
- *Records input, output and logfiles for each job*
- *Allows you to review parameters used*
- *Allows you to rerun a job with the same/modified parameters*

# Project Management Tools (2)

Access additional tools through the “Edit Job Data” option:

Read/Edit Notebook

Edit Job Data

Enter Data for External Job

- **Electronic Notebook**

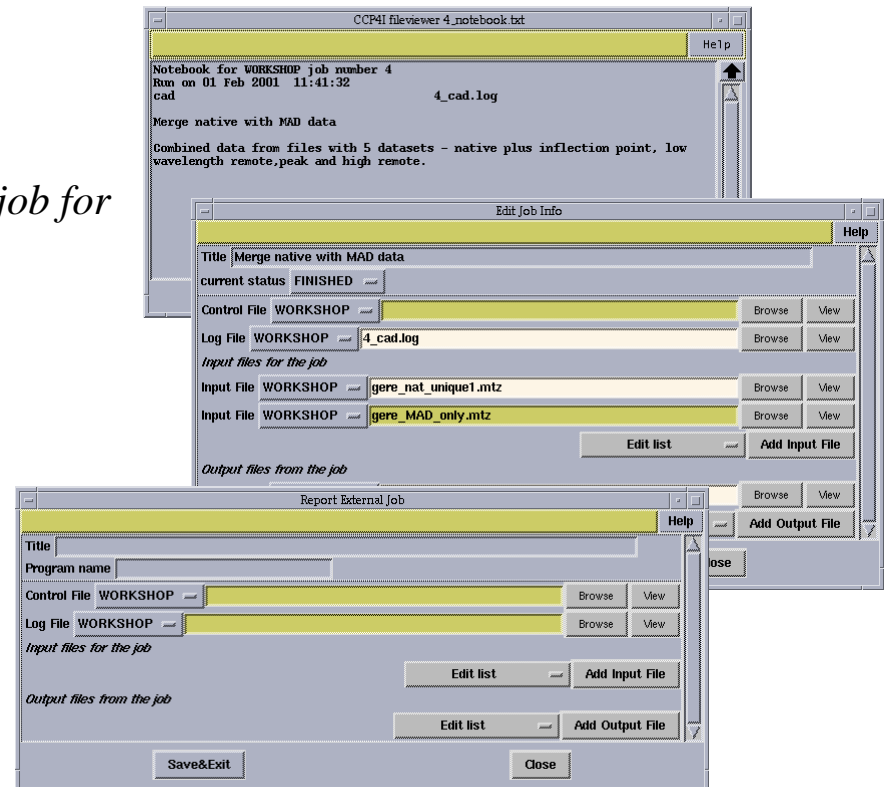
- *Record information about a particular job for future reference*

- **Edit Job Data**

- *Keep Job Database up-to-date*
- *Record changes e.g. of file locations*

- **Report External Tasks**

- *Record runs of non-CCP4(i) programs plus associated files*
- *Keep project history complete*

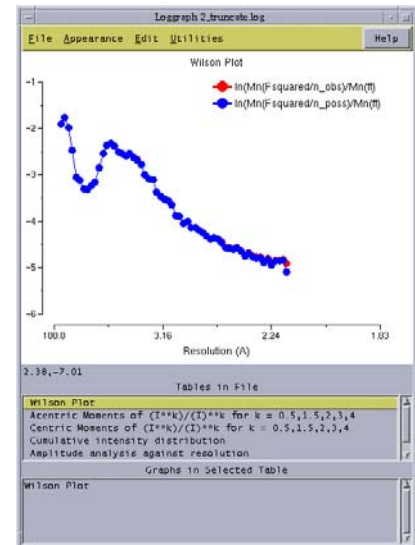


# Data Harvesting

- Why is it useful?
  - *Data is automatically collected in Harvest Files*
  - *The files can be deposited directly, reducing the amount of manual handling at deposition*
- What does it require?
  - *Harvesting Project & Dataset names must be defined in MTZ file*
  - *Can be done at any entry point (e.g. “import” tasks) or via “Edit Project & Dataset Name” task*
- How much work is it?
  - *Switch harvesting on (or off) in Preferences or in individual tasks*
  - *That’s all*

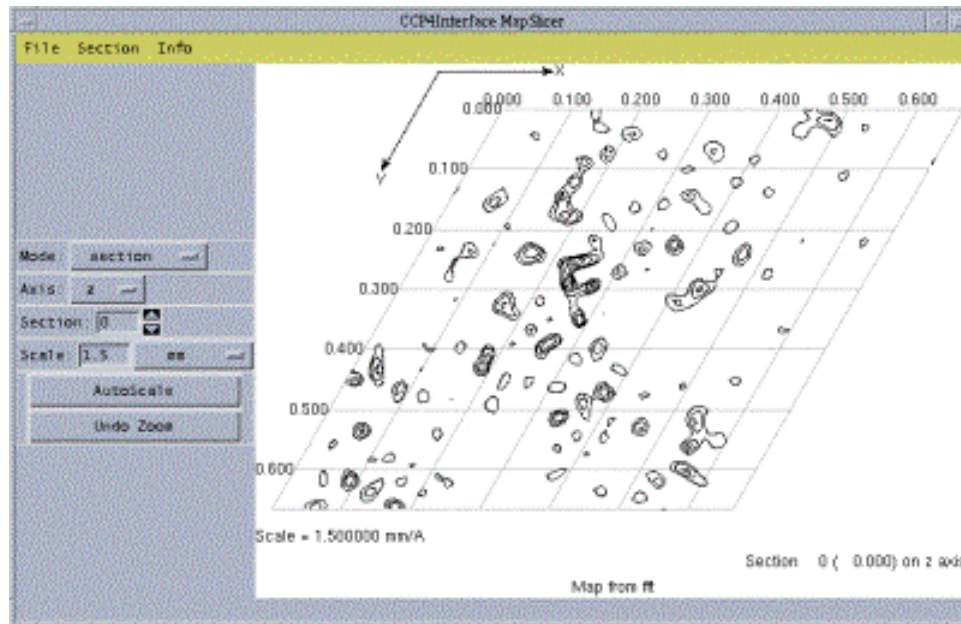
# File Viewers (1)

- From within CCP4i:
  - *View Files from Job*: always uses default file viewer
  - *View Any File*: allows you to select from available viewers
- From Unix command line:
  - Use **ccp4i -v <filename>** to view a file in the default viewer
  - Useful for MTZ files (automatically runs *mtzdump* program to display header)
- HTML logfiles
  - Can be viewed as plain text or in HTML browser
- Loggraph
  - View tables and graphs in CCP4-formatted logfiles
  - Can also use **loggraph <filename>** at the command line



# File Viewers (2)

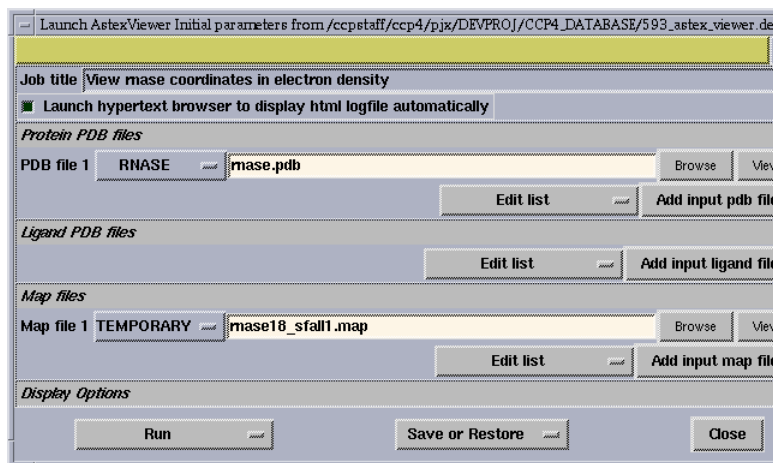
- MapSlicer
  - *Interactive viewer for map sections*
  - *Can view single sections or slabs on x, y or z axes*
  - *Special mode for viewing Harker sections*
  - *Can set this to be the default map viewer in “Preferences”*



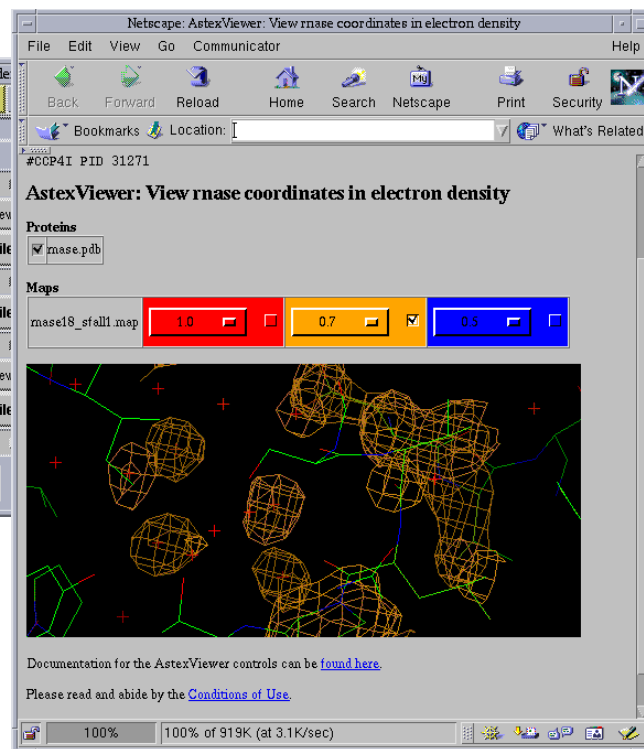


# File Viewers (3)

- AstexViewer
  - *Java-based protein-ligand viewer*
  - *Displays structures in electron density*
  - *Can be launched from “AstexViewer” task in Program List*

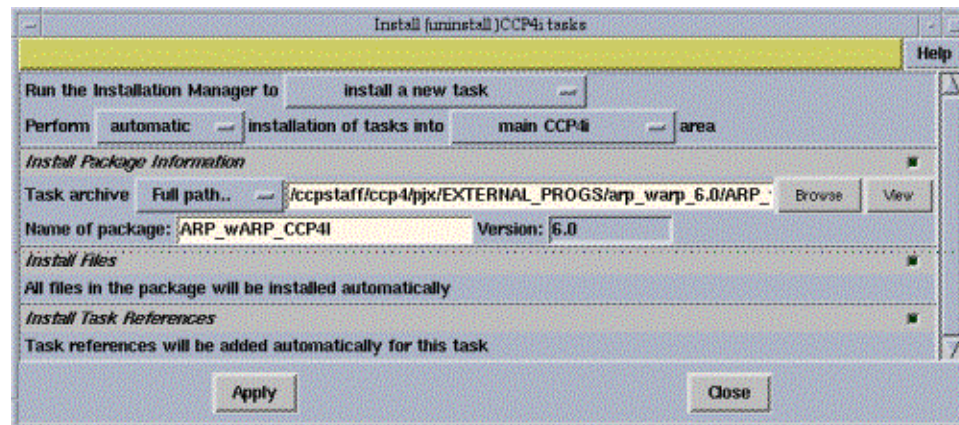


- XtalView/Xfit launcher
  - *Also available for those who prefer to use XtalView - in “Model Building” module*



# Installing New Tasks

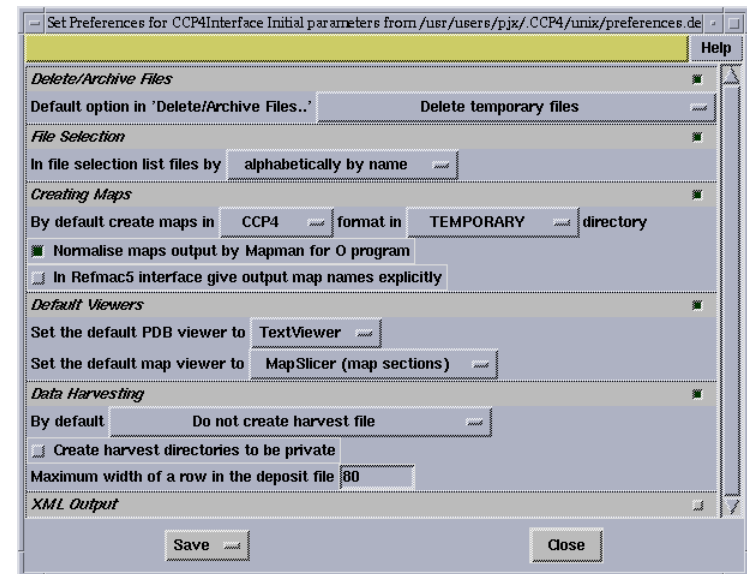
- Install task interfaces supplied for non-CCP4i programs
  - e.g. *ARP/wARP 6.0*
- Accessed from “*System Administration*” menu
  - *New tasks installed in main CCP4i area (available to all)*  
*or in user’s “private” (i.e. \$HOME/.CCP4/..., available only to that user)*
- Allows easy review, update (and de-installation) of currently installed task interfaces



# CCP4i Preferences

Set various useful things in the “Preferences”:

- *Default viewers for maps & PDB files*
- *Default locations and formats for map files*
- *Default Data Harvesting mode*



# Further Information ...

- **Project Management Tools:**

- “*CCP4i as a Project Management Tool*” - CCP4 Newsletter 38 (April 2000)  
[http://www.ccp4.ac.uk/newsletter38/09\\_projman.html](http://www.ccp4.ac.uk/newsletter38/09_projman.html)

- **MapSlicer:**

- “*MAPSLICER: an interactive viewer for contoured map sections*” - CCP4 Newsletter 39 (March 2001)  
[http://www.ccp4.ac.uk/newsletter39/09\\_mapslicer.html](http://www.ccp4.ac.uk/newsletter39/09_mapslicer.html)

- **What’s New in CCP4i 1.3.8/Future Developments:**

- “*Developments with CCP4i*” - CCP4 Newsletter 41 (October 2002)  
[http://www.ccp4.ac.uk/newsletter41/02\\_ccp4i-oct02/ccp4i-oct2002.html](http://www.ccp4.ac.uk/newsletter41/02_ccp4i-oct02/ccp4i-oct2002.html)

- **CCP4i Webpage:**

- [http://www.ccp4.ac.uk/ccp4i\\_main.html](http://www.ccp4.ac.uk/ccp4i_main.html)

# Acknowledgements

- CCP4i was originally developed by Liz Potterton
- CCP4 Daresbury staff (Peter Briggs, Martyn Winn, Charles Ballard, Alun Ashton, Pryank Patel)
- AstexViewer developed by Mike Hartshorn of Astex Technologies
- Maria Turkenburg, Eleanor Dodson, Anne Baker
- *& Everyone who has contributed ideas and comments!*

**The End.**